

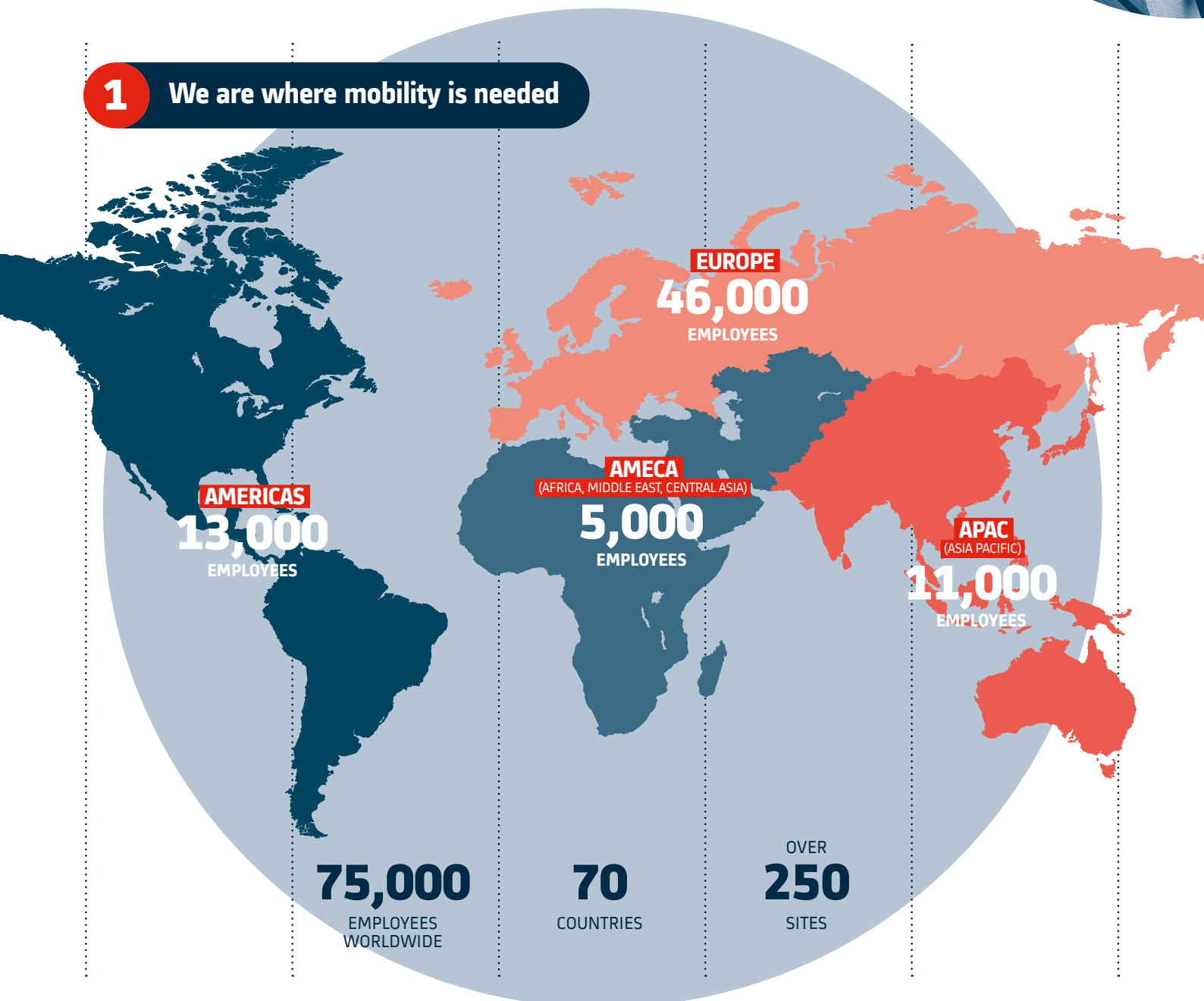
# INNOVATING FOR SMARTER AND GREENER MOBILITY

“The acquisition of Bombardier Transportation is a unique opportunity for Alstom to strengthen its global position on the booming mobility market. It enables us to improve our global reach and our ability to respond to the increasing need for sustainable mobility.”

HENRI POUPART-LAFARGE  
Alstom Chairman and CEO



## 1 We are where mobility is needed



## 2 The most complete portfolio of the rail industry

### Rolling Stock (incl. Components)



- High Speed
- Regional & Commuter
- Locomotives
- Components
- Metro & Suburban
- Light Rail
- E-bus
- Monorail

### Digital & Integrated Systems



- Urban Signalling
- Infrastructure & Telecom
- Signalling & Infrastructure Services
- Mainline Signalling
- Smart Mobility
- Cybersecurity
- Turnkey

### Services



- Maintenance & Operations
- Modernisation
- Parts, Repairs & Overhauls
- Digital Services
- Support Services

## 3 Our strengths

**17,500**  
ENGINEERS

OVER  
**150,000**  
VEHICLES  
IN COMMERCIAL SERVICE

OVER  
**10,000**  
PATENTS

PARTNER TO OVER  
**300**  
CITIES

## 4 We address Sustainability & CSR challenges



**ENABLING** the  
decarbonisation  
of mobility

- Develop **energy-efficient and eco-designed solutions**, leveraging digital technologies
- Lead **innovation** for **energy transition** in rail and beyond
- Use **renewable energy** in our factories



**CARING**  
for people

- Position **Health & Safety** as **utmost priority** for all employees & contractors, targeting Zero Severe Accident
- Implement **Inclusion** as one of the 3 Alstom values focusing in particular on gender and cultural diversity



**CREATING** a positive  
impact on society

- Support **local socio-economic development** in our **territories**
- Develop corporate citizenship through **community investment** & Alstom **Foundation** projects



Acting as a  
**RESPONSIBLE**  
business partner

- Deploy **sustainable sourcing** as the cornerstone of Alstom's value chain
- Commit to and apply the highest standards of **integrity**



**ALSTOM  
FOUNDATION**

**Giving back to the community:  
The Alstom Foundation  
is the concrete expression  
of Alstom's corporate citizenship  
commitment and a means  
of contributing sustainably  
to communities in need.**